



WWW.BCFAB.COM

1961-1969 LINCOLN CONTINENTAL FRONT BRACKETS

1. Raise and support the vehicle at a safe and comfortable working height.

2. Remove the front wheels, shocks, and springs, refer to your service manual for disassembly procedure.

3. Mark 1/2" from the bottom of the Upper Spring Pocket as shown (IMG 02). Cut along the marked line, (IMG 03) this will give the airbag the extra clearance it needs.

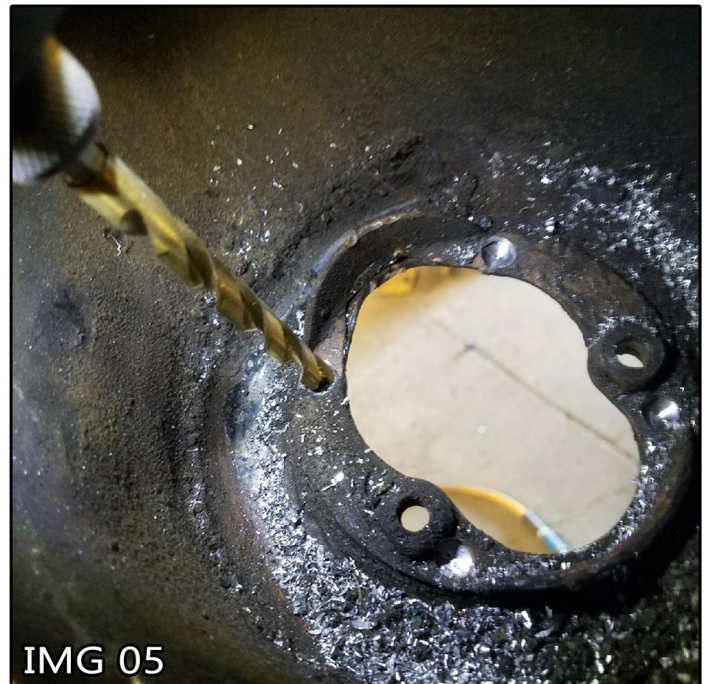


1961-1969 LINCOLN CONTINENTAL FRONT BRACKETS

4. Drill out the four spot welds in the lower spring pocket as shown.
(IMG 04/05)



5. Remove the lower spring pocket retainer.



6. Clean all the excess metal shavings to prevent damage to the airbag.
(IMG 06)



1961-1969 LINCOLN CONTINENTAL FRONT BRACKETS

7. Apply thread sealant (teflon tape) to the air fitting and install into the (6") airbag.

8. Next bolt the upper cup onto the airbag, and screw the allthread into the upper cup. (IMG 07)

9. Install the lower cup into the lower spring pocket. (IMG 08)

10. Connect the airline to the air fitting and slide the upper cup & airbag into the spring pocket. Next place the washer on top of the spring pocket and tighten down.

11. Next bolt the airbag to the lower cup.

12. Install wheels, and make sure airbag fitment is correct **ANY RUBBING WILL RESULT IN AIRBAG FAILURE!** This is a non-warrantable issue.

